

A66 Northern Trans-Pennine Project

Scheme 0102: M6 Junction 40 to Kemplay Bank

TR010062

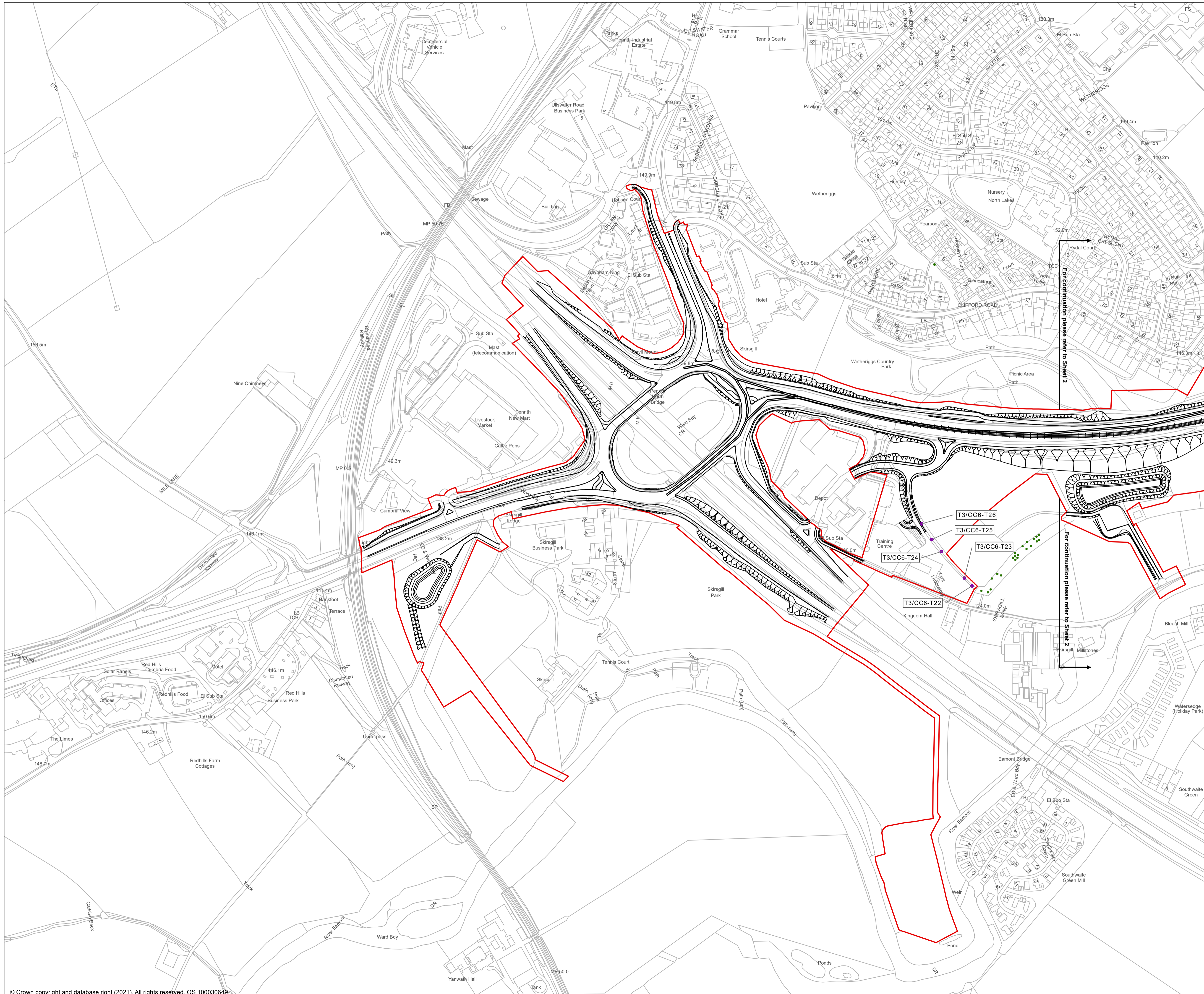
5.24 Tree Preservation Order Trees Location Plans

APFP Regulations 5(2)(I)

Planning Act 2008

**Infrastructure Planning (Applications: Prescribed Forms and
Procedure) Regulations 2009**

June 2022

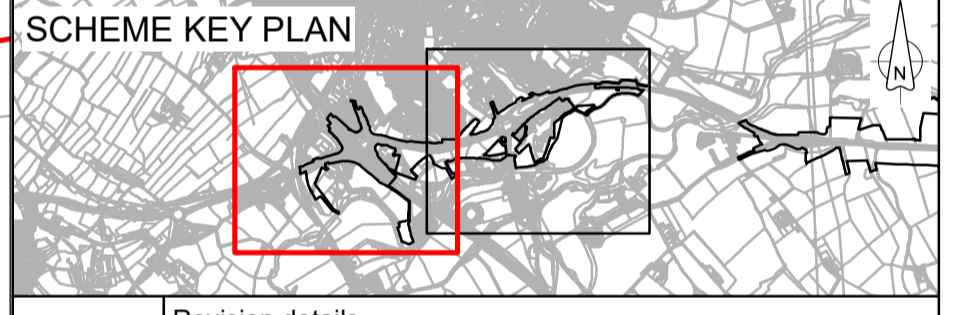
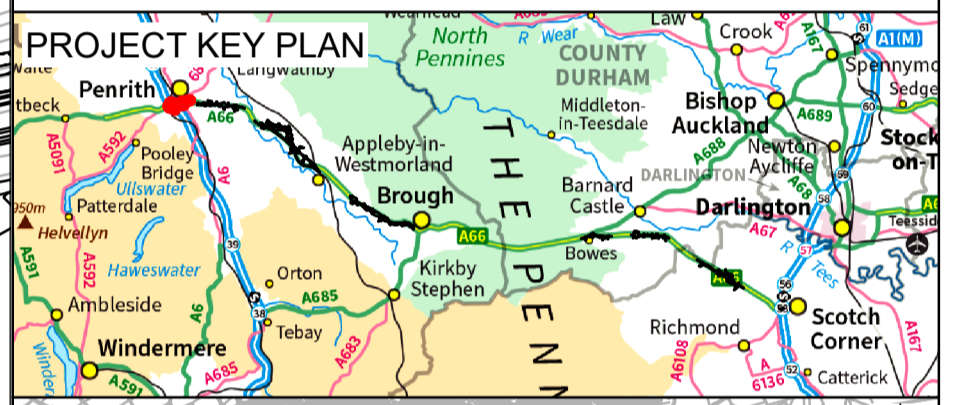


- NOTES**
1. ALL DIMENSIONS ARE IN METRES UNLESS STATED OTHERWISE.
 2. THESE PLANS SHOULD BE READ IN CONJUNCTION WITH OTHER PLANS AND DOCUMENTS IN THE DEVELOPMENT CONSENT ORDER APPLICATION.
 3. TREE PRESERVATION ORDERS (TPO) ARE MADE UNDER THE TOWN AND COUNTRY PLANNING (TREE PRESERVATION) (ENGLAND) REGULATIONS 2012.

TREE PRESERVATION ORDERS WITHIN THE DCO BOUNDARY

TPO NUMBER	DESCRIPTION
T3/CC6-T22	ASH TREE IN A LINE OF TREES ALONG THE CUMBRIA COUNTY COUNCIL SKIRSGILL DEPOT ROAD TOWARDS THE HEALTH AND CARE SERVICES BUILDING.
T3/CC6-T23	ELM TREE IN A LINE OF TREES ALONG THE CUMBRIA COUNTY COUNCIL SKIRSGILL DEPOT ROAD TOWARDS THE HEALTH AND CARE SERVICES BUILDING.
T3/CC6-T24	SYCAMORE TREE IN A LINE OF TREES ALONG THE CUMBRIA COUNTY COUNCIL SKIRSGILL DEPOT ROAD TOWARDS THE HEALTH AND CARE SERVICES BUILDING.
T3/CC6-T25	SYCAMORE TREE IN A LINE OF TREES ALONG THE CUMBRIA COUNTY COUNCIL SKIRSGILL DEPOT ROAD TOWARDS THE HEALTH AND CARE SERVICES BUILDING.
T3/CC6-T26	SYCAMORE TREE IN A LINE OF TREES ALONG THE CUMBRIA COUNTY COUNCIL SKIRSGILL DEPOT ROAD TOWARDS THE HEALTH AND CARE SERVICES BUILDING.

- KEY**
- ROUTE ALIGNMENT
 - EXISTING A66
 - ORDER LIMITS
 - TREE PRESERVATION ORDER WITHIN THE ORDER LIMITS
 - TREE PRESERVATION ORDER (TPO) / WOODLAND
 - COUNTY BOUNDARY



Revision details					
Revision	HTER	KBIG	ACAR	EFOS	SBAG
	17/03/22	21/03/22	22/03/22	23/03/22	23/03/22
Revision details					
Revision	Created	Checked	Reviewed	Approved	Authorised
	dd/mm/yy	dd/mm/yy	dd/mm/yy	dd/mm/yy	dd/mm/yy

Purpose
DCO APPLICATION

PINS Reference Number
TR010062/APP/5.24

Client
**3 Piccadilly Place
Manchester
M1 3BN**



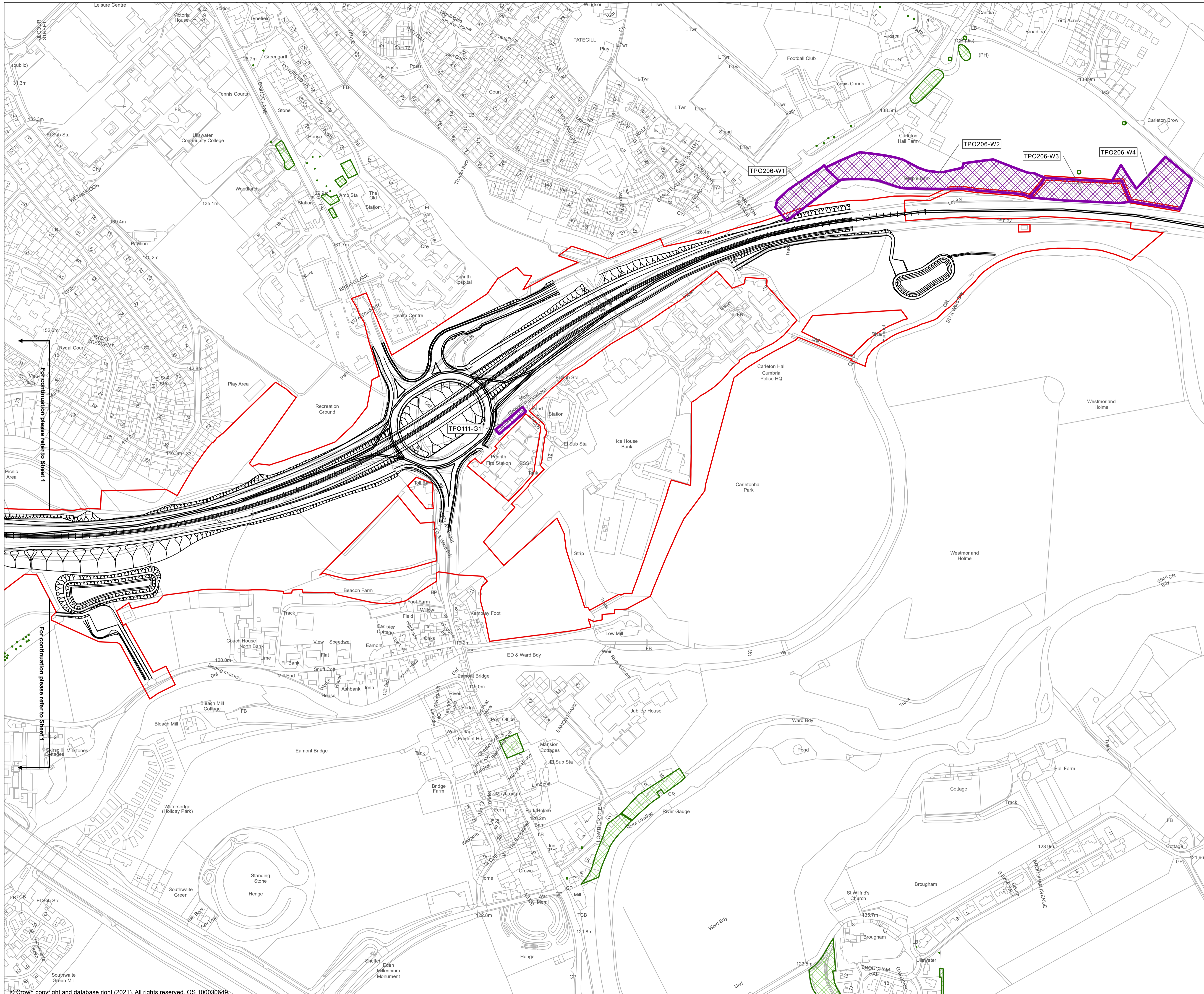
Project Name / Scheme Name
**A66 Northern Trans-Pennine Project
Scheme 0102
M6 Junction 40 to Kemplay Bank**

Drawing Title
**Tree Preservation Order
Trees Location Plan
Regulation 5(2)(l)
Sheet 1 of 2**

Project Ref. No.	Stage	Scale	@
---	PCF 3	1:2500	A1
		Dimension	M

Drawing Number			
Project	Originator	Volume	
HE565627	AMY	HAC	-
S0102		DR - CH	000011
Location	Type	Role	Number

Suitability	Suitability Description	Revision
S4	FIT FOR STAGE APPROVAL	P02

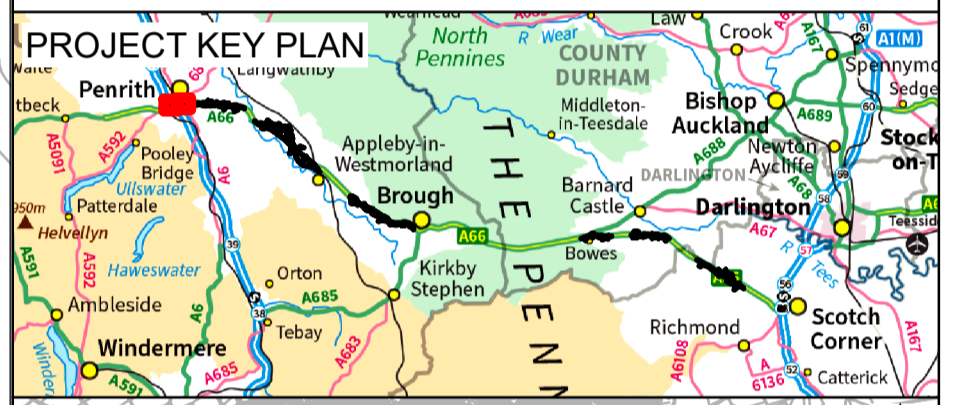


- NOTES**
1. ALL DIMENSIONS ARE IN METRES UNLESS STATED OTHERWISE.
 2. OTHER PLANS AND DOCUMENTS IN THE DEVELOPMENT CONSENT ORDER APPLICATION.
 3. TREE PRESERVATION ORDERS (TPO) ARE MADE UNDER THE TOWN AND COUNTRY PLANNING (TREE PRESERVATION) (ENGLAND) REGULATIONS 2012.

TREE PRESERVATION ORDERS WITHIN THE DCO BOUNDARY

TPO NUMBER	DESCRIPTION
TPO111-G1	GROUP OF FIVE LIME AND ONE SYCAMORE, STANDING ON THE A66 FRONTAGE ON THE SOUTH SIDE OF THE ROUNDABOUT.
TPO206-W1	MIXED BROADLEAVED AND CONIFEROUS WOODLAND ON SLOPING GROUND BETWEEN A686 CARLETON AVENUE AND A66.
TPO206-W2	MIXED BROADLEAVED WOODLAND ON SLOPING GROUND BETWEEN FIELD AND A66 DIRECTLY SOUTH OF CARLETON HALL FARM.
TPO206-W3	MIXED BROADLEAVED AND CONIFEROUS WOODLAND ON SLOPING GROUND BETWEEN W2 AND W4 WITHIN LAND MANAGED AS PART OF A66.
TPO206-W4	MIXED BROADLEAVED ON SLOPING GROUND BETWEEN CARLETON ROAD (EAST) AND A66 DIRECTLY SOUTH OF CARLETON BROW.

- KEY**
- ROUTE ALIGNMENT
 - EXISTING A66
 - ORDER LIMITS
 - TREE PRESERVATION ORDER WITHIN THE ORDER LIMITS
 - TREE PRESERVATION ORDER (TPO) / WOODLAND
 - COUNTY BOUNDARY



Revision	Revision details				
	HTER	KBIG	ACAR	EFOS	SBAG
	17/03/22	21/03/22	22/03/22	23/03/22	23/03/22
Revision	Revision details				
	Created	Checked	Reviewed	Approved	Authorised
	dd/mm/yy	dd/mm/yy	dd/mm/yy	dd/mm/yy	dd/mm/yy

Purpose
DCO APPLICATION

PINS Reference Number
TR010062/APP/5.24

Client
3 Piccadilly Place
Manchester
M1 3BN

Project Name / Scheme Name
A66 Northern Trans-Pennine Project
Scheme 0102
M6 Junction 40 to Kemplay Bank

Drawing Title
Tree Preservation Order
Trees Location Plan
Regulation 5(2)(l)
Sheet 2 of 2

Project Ref. No.	Stage	Scale	Dimension
---	PCF 3	1:2500 @ A1	M

Drawing Number	Project	Originator	Volume
HE565627	-	AMY	- HAC -
S0102	-	DR - CH	- 000012
	Location	Type Role	Number

Suitability	Suitability Description	Revision
S4	FIT FOR STAGE APPROVAL	P02